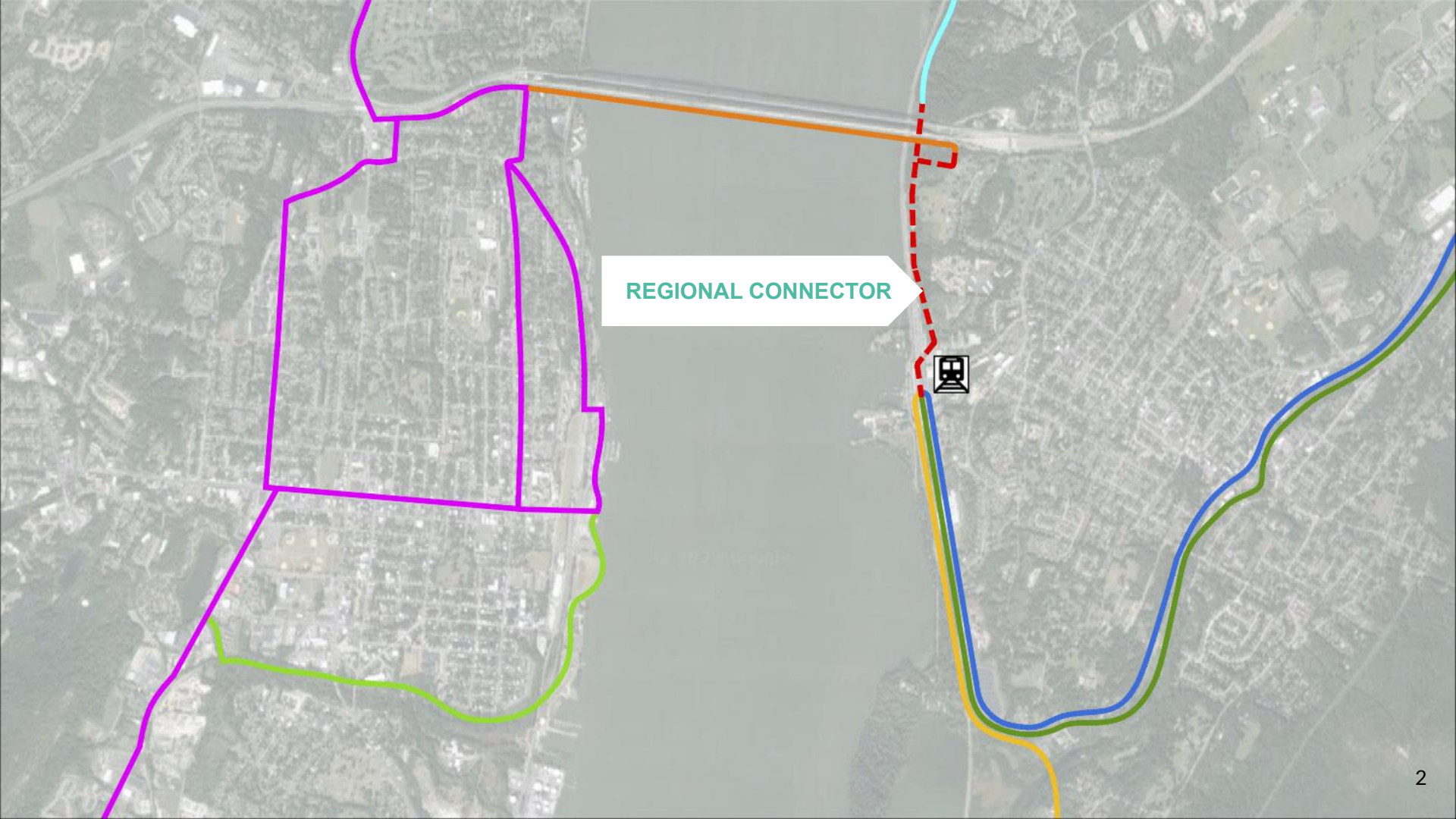

REGIONAL CONNECTOR



REGIONAL CONNECTOR

NEWBURGH (TOWN)

32,000

FISHKILL

22,000

REGIONAL CONNECTOR

NEWBURGH

28,900*



BEACON

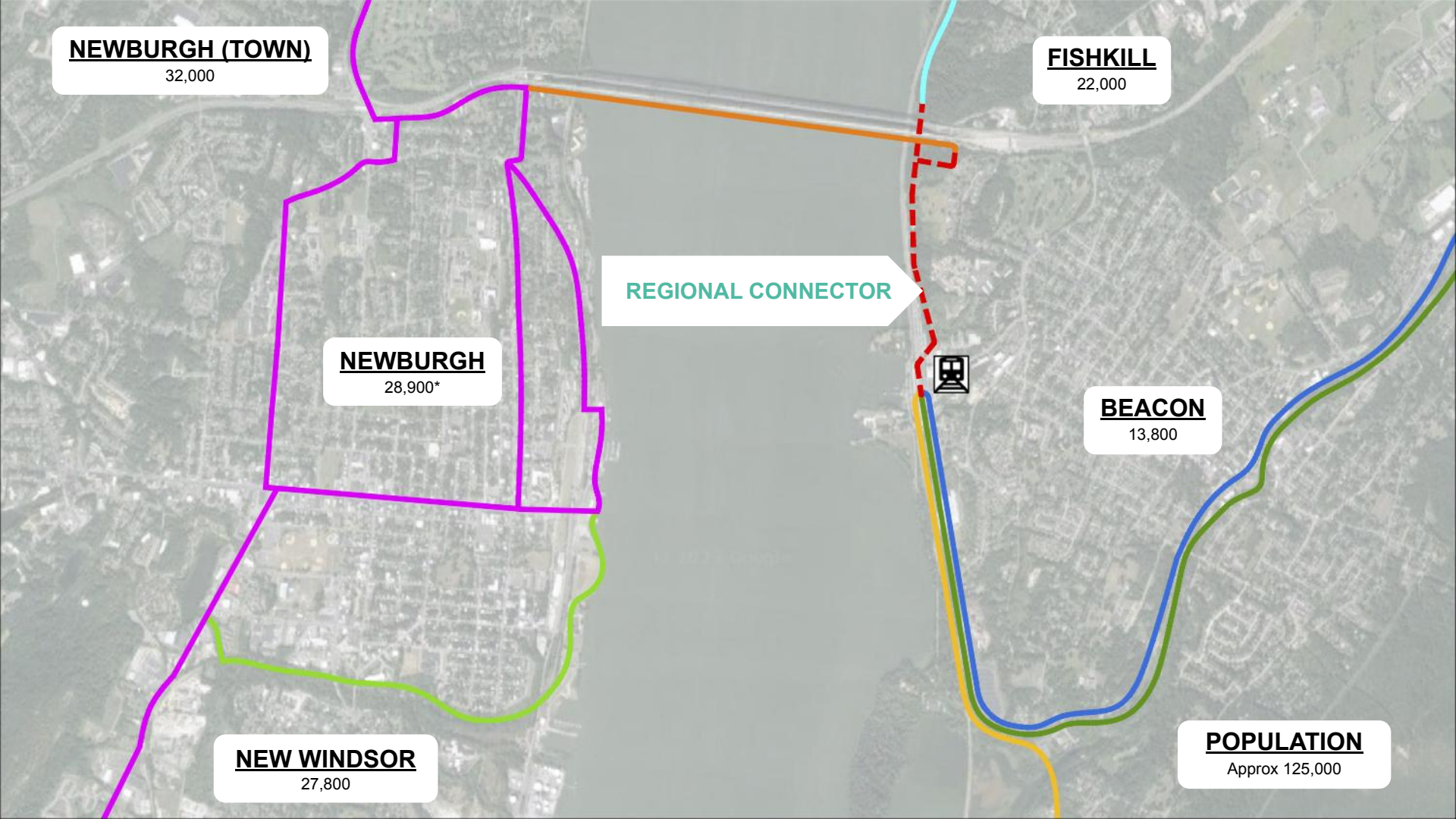
13,800

NEW WINDSOR

27,800

POPULATION

Approx 125,000



VISION, GOALS & OBJECTIVE

Our Vision: To unite Newburgh, Beacon, and neighboring communities to each other and to an expanding trail network with a *safe, enjoyable bicycle-pedestrian connection*.

Our Goal: To see this project implemented within 5-7 years.

Our Objective for 2024: To form a broad coalition of stakeholders and supporters and leverage their influence and support to motivate a collaborative implementation team.

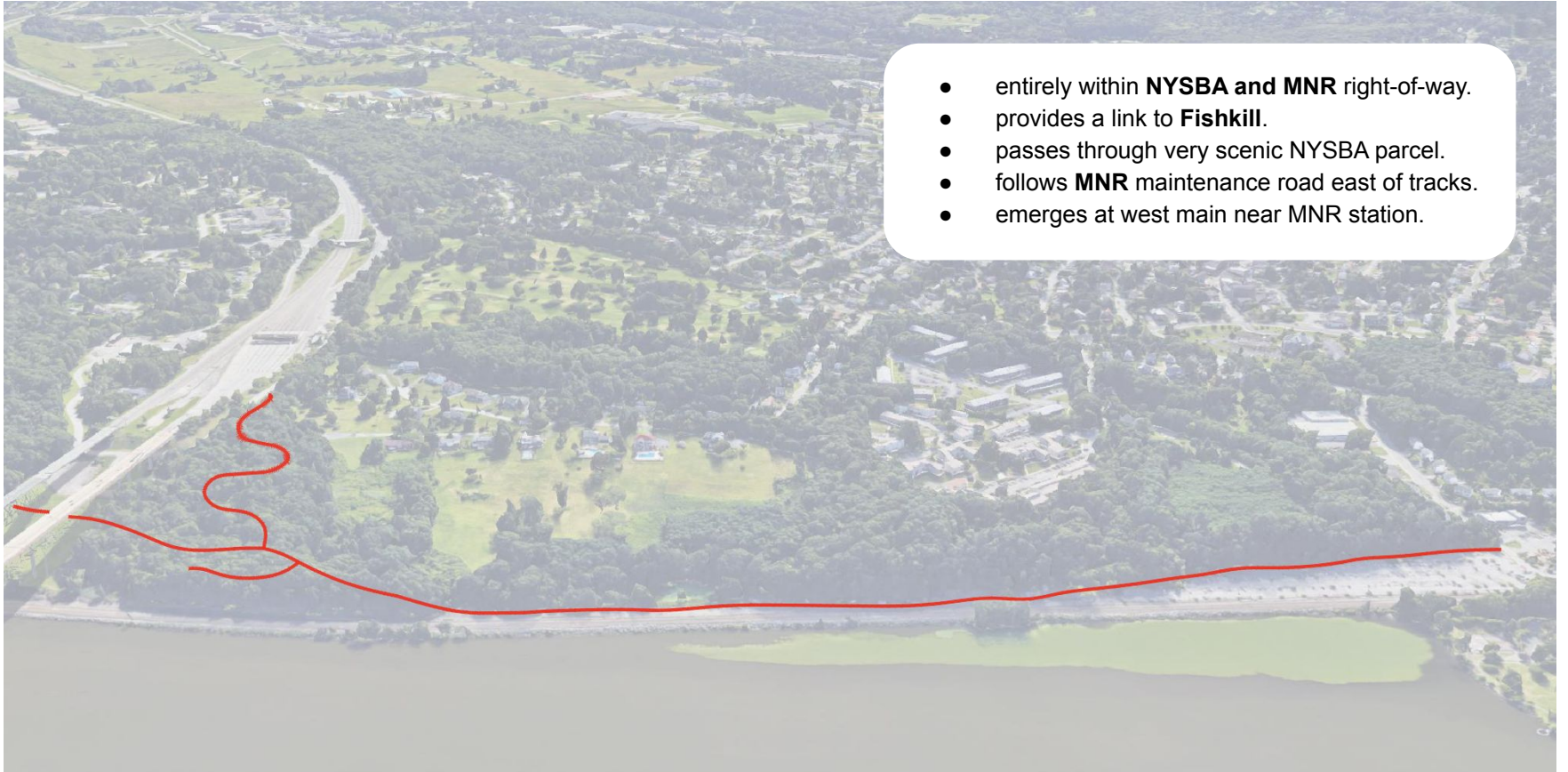
BACKGROUND

- Beacon Greenway Committee initiated connector trail planning in 2016.
- Renewed momentum with the recent **removal of curfew** on pedestrian path in 2022.
- growing frustration with **inadequate and dangerous transportation links and bike infrastructure**.
- efforts in Newburgh & Beacon pursue **Bike-Pedestrian Master Plans**.
- The success of **Empire State Trail, Walkway over the Hudson**, continued growth of trail networks.
- anticipated **continued growth** in the region.



THE CONNECTOR

REGIONAL CONNECTOR LINK



- entirely within **NYSBA** and **MNR** right-of-way.
- provides a link to **Fishkill**.
- passes through very scenic NYSBA parcel.
- follows **MNR** maintenance road east of tracks.
- emerges at west main near MNR station.



MNR - BEACON



NYSBA PARCEL

MNR - BEACON



NYSBA PARCEL

MNR - PARCEL

MNR - BEACON

OSI - PARCEL

NYSBA PARCEL

MNR - PARCEL

MNR - BEACON





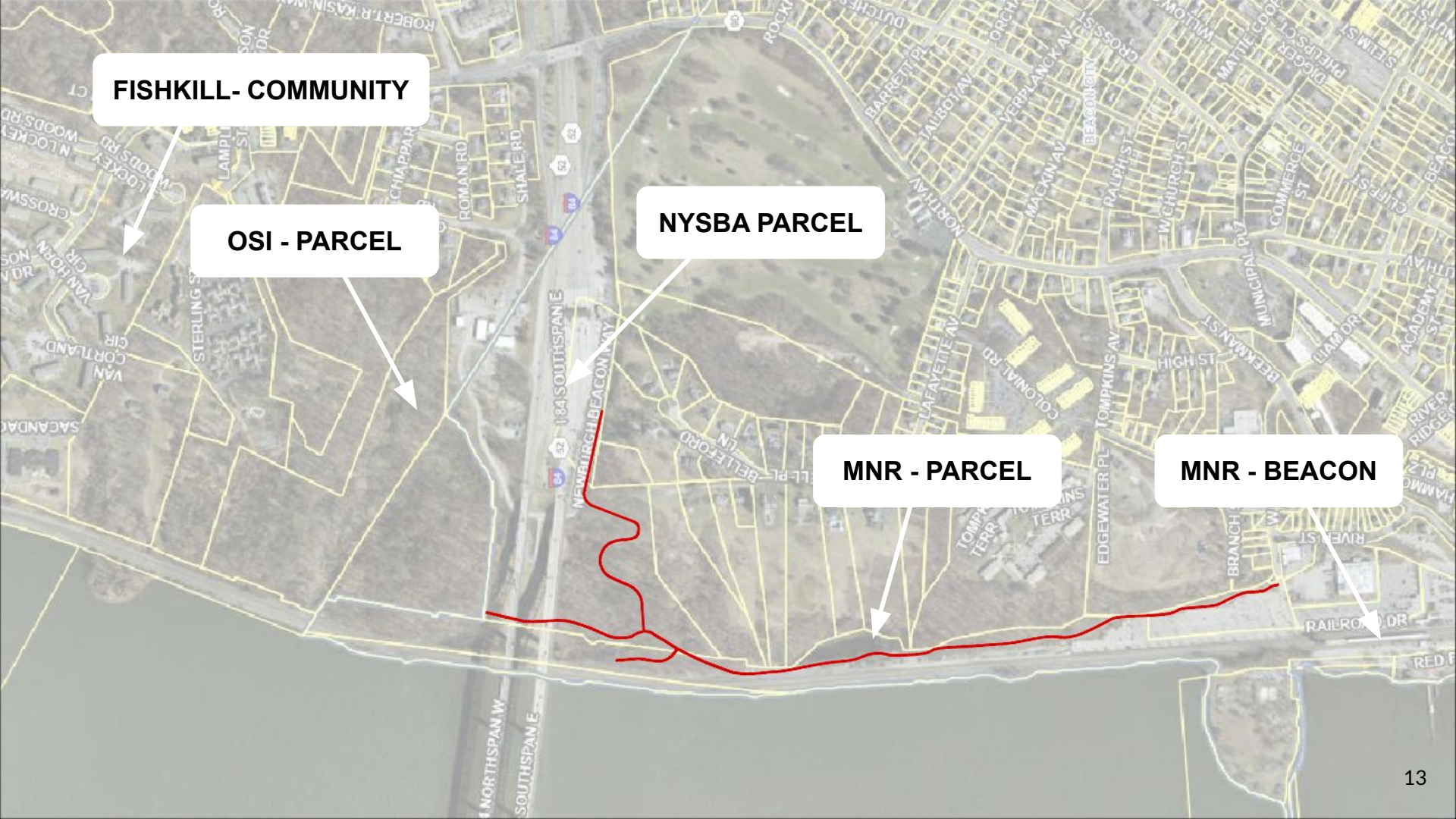
FISHKILL- COMMUNITY

OSI - PARCEL

NYSBA PARCEL

MNR - PARCEL

MNR - BEACON



9W CONNECTOR



9W CONNECTOR



An aerial photograph of a city area with several colored overlays. A purple line outlines a large rectangular area on the left side of the image. A green line follows a path along the bottom and right edges of this purple-outlined area. A red dashed line runs vertically along the right edge of the purple-outlined area. A blue line runs vertically along the right edge of the red dashed line. An orange line runs horizontally from the top left towards the right, crossing the red dashed line. A black and white train icon is located on the red dashed line. Two white callout boxes with green text are on the left side. The background is a faded aerial view of a city with buildings, streets, and a large body of water on the right.

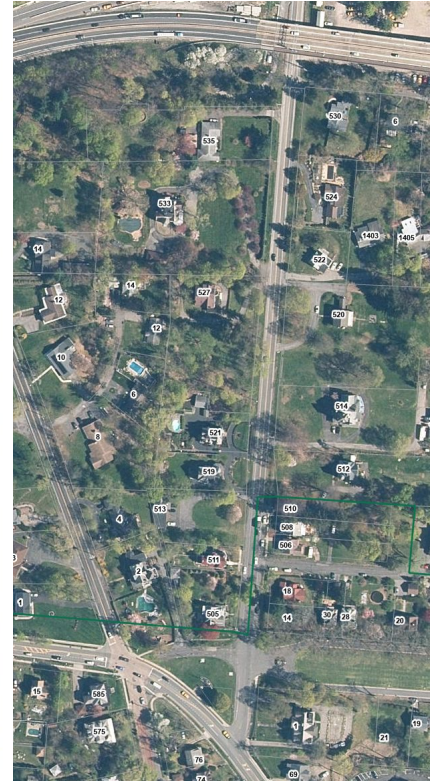
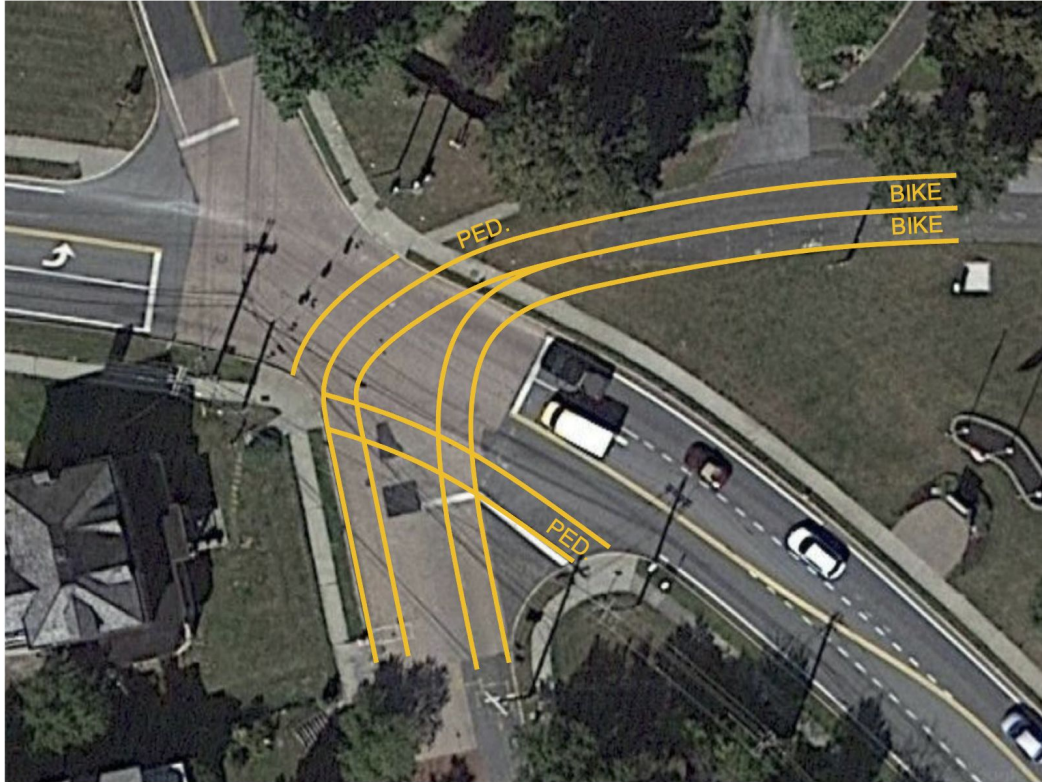
9W CONNECTOR

FULLERTON Ave
to LAKE St

An aerial photograph of a city area with several colored overlays. A purple outline covers a large portion of the city on the left. A green line follows a path along the bottom and right edges of the purple area. A red dashed line runs vertically on the right side. A blue line follows a winding path on the right side. A yellow line runs vertically on the right side. A black and white train icon is located on the red dashed line. A callout box with a white background and a black border points to the intersection of an orange line and the red dashed line. The callout box contains the text "LEROY PLACE INTERSECTION".

LEROY PLACE
INTERSECTION

Leroy Place Intersection





LEROY PLACE
INTERSECTION

LIBERTY STREET

BENEFITS

TRANSIT

- a **shorter and safer** way to walk or bike to MNR Beacon Station.
- Connecting **transit with growing trail network**
- **non-vehicular access** to Fishkill residents.
- **30% of Newburgh's residents have no access to a car.**
- eliminates **expensive parking** passes.
- easily integrated into future MTA **TOD development** plans.



ECONOMIC

- **Broader employment access and opportunities** enhances regional economy.
- **Tourism** facilitated by mass transit, and not by car, dropping passengers at trailhead.
- **Sales revenue** as a result of increased access to area's **recreational, cultural and historical riches**.
- **Increased property values** as a result of improved access to regional parks and trails network.
- **A bike share system with E-Bike options** would further enhance access and benefits.
- **Transformative** nature of project.



RECREATION

- EAST:
 - The MTA station at Beacon is the trailhead for:
 - Beacon's Fishkill Creek Greenway Trail
 - The Fjord Trail
 - The Beacon to Hopewell Junction Rail Trail
 - Fishkill spur provides direct connection to **Verplank Landing- 55 acres park potential**
- WEST:
 - the Regional Connector would facilitate bike and pedestrian access to:
 - The Quassaick Creek Greenway in Newburgh
 - The Schunemunk Trail in Orange County



ENVIRONMENTAL JUSTICE

- **125,000 people** populate the communities of this region, in which Newburgh and Beacon are **designated as disadvantaged (DAC)**.
- The City of Newburgh has a **poverty rate of 40%**.
- Low income communities have historically have been carrying the increased health risks due to poor air quality.
- Improvements to mass transit access, walking and cycling amenities, air quality and healthier lifestyles must be shared equitably, with DACs prioritized.
- In addition, engaging communities with the natural environment fosters awareness and stewardship.
- Provides transportation alternatives consistent with CLCPA mandate.



WORK TO DATE

FUNDING

Transportation Grants:

Safe For All

Reconnecting Communities

MAP-21 Transportation Enhancements Program

Federal Highway Administration Recreational Trail Program

Federal Transit Administration (FTA) Section 5307 Funds

Social Justice Grants:

Justice40 Communities

NYS Department of State Quality Communities Grant Program

Recreation Grants:

Hudson River Valley Greenway Grant

Recreational Trails Program (RTP)

New York State Congestion Mitigation and Air Quality Program

Hudson River Improvement Fund

Environmental Grants:

Climate Act Grants

NYS Environmental Protection Fund (EPF)

NYS OPRHP Consolidated Funding Application (CFA)

NYS DOS Office of Communities & Waterfronts

Environmental Protection Fund Local

Waterfront Revitalization Program (EPF LWRP)

NYS OPRHP Community Grant Opportunities

STAKEHOLDERS

Municipalities

- City of Beacon*
- City of Newburgh*
- Town of Fishkill
- Town of Newburgh*
- CAC and TAC of Newburgh and Beacon*

Counties

- Dutchess County Planning*
- Orange County Planning*

Legislative

- City Councils* and County Legislators
- NY State Senator Rob Rolison
- NY Assemblymember Jonathan Jacobson*
- US Congressman Pat Ryan*

NY Metro Agencies

- ESD
- NYSBA*
- MTA-Metro North Railroad

Land Use/Environmental Orgs

- HV Regional Council*
- Scenic Hudson*
- Open Space Institute*
- Fjord Trail*
- New York - New Jersey Trail Conference
- Quassaick Creek Greenway*
- Beacon Greenway Committee*
- Parks and Trails New York*

- Dutchess Think!
- Orange County Partnership
- Pattern for Progress
- Vision Hudson Valley

State Agencies

- 511 Rideshare*
- NYSDOT
- NYSDEC
- NY State Parks, Recreation and Historic Preservation
- Empire State Trail

GRASSROOTS COALITION

- Dia Beacon*
- George Washington Headquarters
- Outdoor Promise
- Greater Newburgh Parks Conservancy
- BCAN
- Beacon Bicycle Coalition & Newburgh Critical Mass
- Ecological citizens project
- Cornell Cooperative Extension
- Boys and Girls Club
- Desmond Center at MSMC
- OC Community College^
- NAACP
- Newburgh Free Library
- Newburgh Urban Food & Farm Initiative
- RUPCO
- Landbank of Newburgh
- Safe Harbor on the Hudson
- Habitat for Humanity
- Community Voices Heard
- For the Many
- Catholic Charities of Orange County^
- Newburgh Ministry^
- Exodus Transitional Community
- RECAP

* Members we've already met and secured their endorsement or letter of support.

^ Organization involved in the Newburgh Beacon Bridge Curfew Campaign

STRATEGY

- Cross-Jurisdictional complicates lead application and implementation
- Limited capacity with both cities
- Intermunicipal Leadership by both Orange County and Dutchess County Planning (MPO)
- Incremental approach to the entire network
- Interdisciplinary support that is required by the interdisciplinary nature of the project

DISCUSSION

In what ways does the Regional Connector align with the goals of your organization or your perspective?

How can we leverage community support to motivate the intermunicipal partnership?

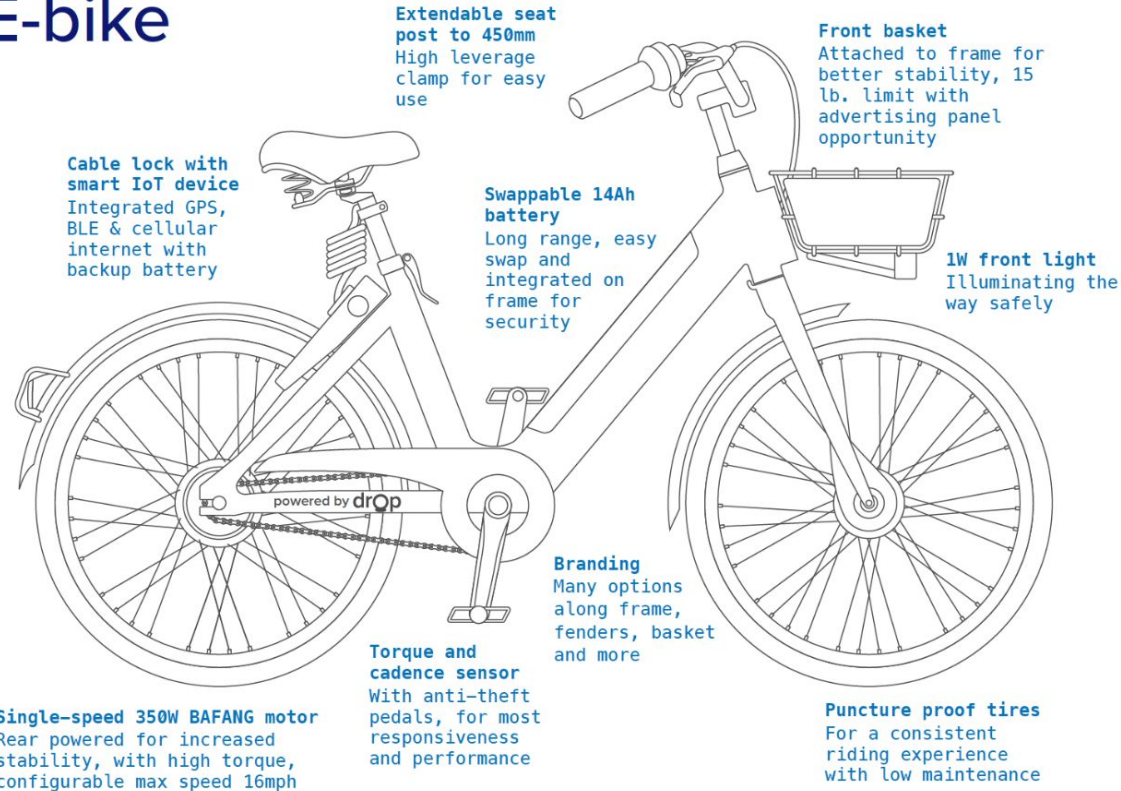
Any interest in doing an Action for Bike Month in May?

THANK YOU

E-BIKE SHARE PROGRAM



E-bike



Drop
Model-E201L

- 26" puncture-proof (airless) tires
- 36V 14Ah swappable batteries
- 5hr to full charge
- Custom keyed lock to swap battery
- 40+ mile (60+ km) range
- Shimano front and rear brakes
- 16 mph (25 km/h) max speed
- Seat post extends 450mm
- Internet connected smart lock
- Lock-to cable mechanism
- Solar-powered rear light & reflector
- Front fork limits oversteering
- All-weather kickstand
- BAFANG 350W motor
- Less than 60 lbs
- All aluminum frame and assembly

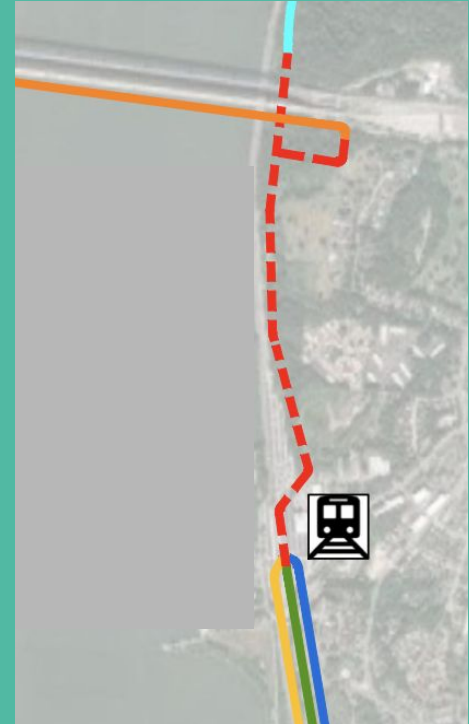
ISO4210 and CFR1512 certified

**Additional customizations
and vehicle types available**

SUMMARY

This community- driven transportation and regional revitalization project will:

- Unify various alternative transportation and recreational trails
- Increase mobility and safety of commuters
- Reduce pollution from transportation sources
- Expand affordable transportation options
- Facilitate efficient land use and connect recreational pathways in our region
- Offer support to disadvantaged and under-resourced communities



Group Discussion

Questions:

- Other projects that intersect? Do we know folks involved in leading that effort?
- Who else to speak with? Residents along the route? Fishkill?
- Experience with other new or old elected officials?
- How to keep momentum going?
- What a good campaign would look like? What are ideas for actions for a campaign? Bike May Month.
- How do we envision this bridge turning into a walkway?
-